



CONTINUOUS MOTION CASE PACKER



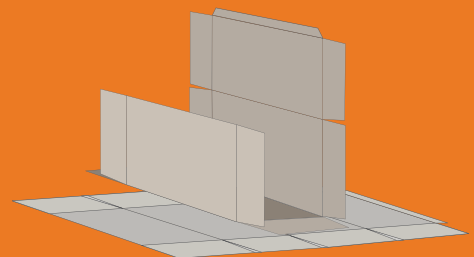
All pictures shown are for illustration purpose only.
Actual product may vary.

CONTINUOUS MOTION CASE PACKER

THE CONTINUOUS MOTION CASE PACKER IS A HIGH SPEED CASE PACKER, CAPABLE OF PACKING UP TO 60 CASES PER MINUTE. THIS CASE PACKER IS AN EXCELLENT CHOICE FOR PACKING ROUND CONTAINERS IN A WRAPAROUND CASE BLANK.

ADVANTAGES

- UTILIZES WRAPAROUND CASE BLANKS
- HIGH SPEED APPLICATION (UP TO 60 CASES PER MINUTE)
- GENTLE HANDLING OF PRODUCT
- GLUE CLOSURE



WRAP AROUND CASE BLANK



CONTINUOUS MOTION CASE PACKER

SPECIFICATIONS	STANDARD OPTION	ADDITIONAL OPTIONS
CASE BLANK CAPABILITIES	Wrap Around blanks	
INFEED OPTIONS		Flood feed style infeed with large accumulation table
PRODUCT LOADING	Continuous motion servo driven mechanisms	
MAGAZINE	Low level magazine	
GLUE SYSTEM	NORDSON ProBlue® Series	Inside manufacturers flap Inline compression of manufacturers flap
GUARD DOORS	Aluminum extruded frame with 1/4" clear or dark acrylic panels	Stainless steel mesh panels
FRAME	3"x3"x1/4" wall tubular mild steel frame	300 series stainless steel 300 series stainless steel with no penetrations
FRAME FINISH	Powder-coat polyester resin finish	
ELECTRICAL	Allen Bradley Human Machine Interface (HMI) Allen Bradley Panel View 700 with ethernet capabilities Allen Bradley compact logix PLC with ethernet capabilities Allen Bradley guard door switches (interlock doors) Bosch indramat servo motors and drives Allen Bradley 3-color light stack with audible alarm NEMA 12 electrical enclosure with external power receptacle and computer port Interface wireway Category III safety circuit 480 VAC, 3ø, 60 Hz	Allen Bradley PV 1000+ ethernet capabilities Allen Bradley control logix PLC with ethernet capabilities Allen Bradley Kinetic 6000 servo motors and drives NEMA 4x electrical enclosures and standards Integral lay in perimeter wireway 240 VAC, 3ø, 60 Hz
PNEUMATICS	Busch dry vane vacuum pump SMC valves and cylinders Parker fittings	Venturi vacuum generators Centralized enclosure
ADJUSTMENTS	Digital indicator with handwheels	Power adjustment for movements over 12"